

Will You Be So Close

paintings / illustrations / installation

MEDIA ENQUIRIES

Annette Heitmann

Mobile: +65 92344179

E-mail:

annettefeasting@gmail.com

DETAILS OF EXHIBITION

Opening Night

4th April, 7PM

27th March – 14th April

Tue to Sun: 1130AM to 7PM

Forth Art Gallery

69A Pagoda Street

(2nd level)

Singapore 059228

<http://www.forth.sg>

Nine emerging artists to hold their first-ever fine arts exhibition

Through a series of paintings, drawings and a fridge, nine emerging artists Singapore's local arts institutions will explore the common human trajectory of closeness in their first-ever fine arts exhibition, "Will You Be | So Close" in April.

The idea for the exhibition began when the co-organisers, Annette Heitmann and Lee Shuxian, two of the six students from the School of Art, Design and Media (ADM) in Nanyang Technological University, wanted a platform to showcase their works.

The exhibit's theme of "close" came from Heitmann, "I felt like I kept searching for someone, something to be close to. Especially so after I lost someone, not physically, but metaphorically, and the space in my life suddenly became very apparent to me."

They sent their friends a call for works and within weeks, they assembled nine artists: six from ADM, a pair who graduated from Nanyang Academy of Fine Arts (NAFA) and one from Lasalle-SIA.

While many of the artists have been involved with smaller exhibitions, this marks their maiden attempt at a fine arts exhibition as they want to promote traditional art forms within the local arts scene. Moreover, taking part in an exhibit means self-progress beyond the confines of an art school regimen.

"This is a chance for us to explore the theme and to stretch our artistic styles, without fear of academic judgment, or grading," said Heitmann.

"I think mostly, everyone is just excited to be part of something that we feel belongs to us, which gives us the motivation to create art that means something to us."

Find the latest details at <http://willyoubesoclose.wordpress.com>

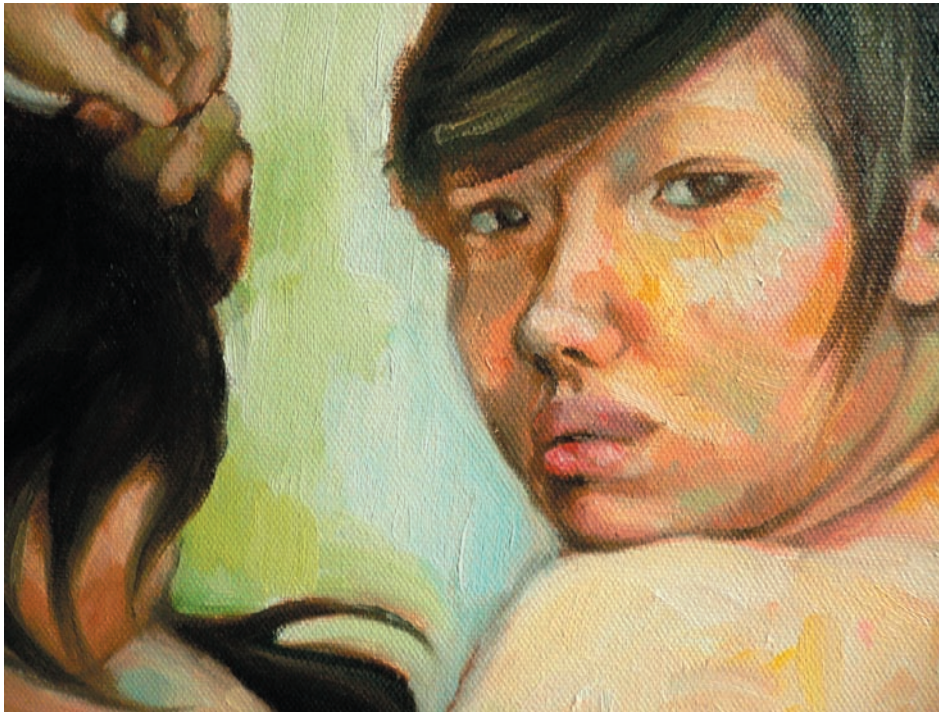
WITH THE SUPPORT OF



Annette Heitmann is the co-organiser of the exhibition. The third-year ADM student was involved in one of ADM's first public exhibition, "No Gallery Leh How" at Home Club last year. In this exhibition, she wants to explore the "space of the dominant male in my life" in her attempt to understand what it feels like to be a whole, complete person.



*Annette's
upcoming work*



*Shuxian's
upcoming works*



Lee Shuxian is the co-organiser of the exhibition. Last year, her works were featured in Kinokuniya as part of the CIAK Asia Tour Singapore and at *scape in "The Weight of an Elephant's Dream". In her upcoming paintings, the second-year ADM student wants to explore our human desire for intangible closeness of love and personal boundaries.

Daniel Lim Yu-Heng has had works exhibited in “No Gallery Leh How” (2007) at Home Club, the Singapore Art Show (2004) together with Plastique Kinetic Worms and “Red + White = Pink” (2003) at Utterly Art. In this exhibition, the second-year ADM student’s paintings express the mutual desire to be loved and accepted, whilst hinting at the stifling nature of holding someone too close.

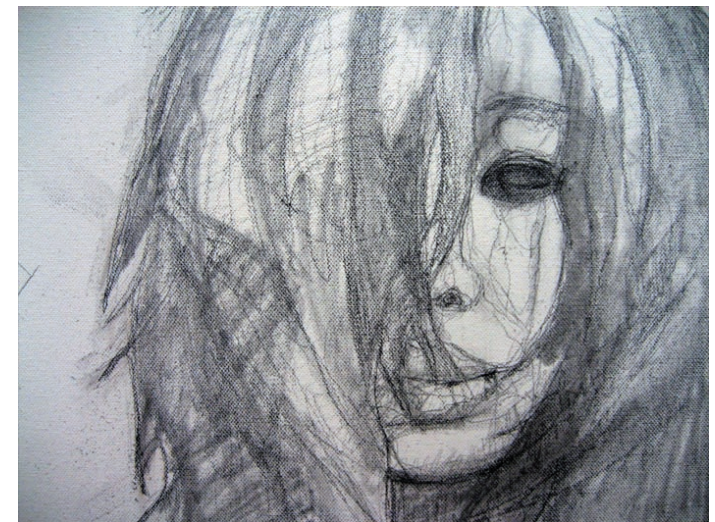


*Daniel's
upcoming work*



Nigel Heng is in his first year at ADM and has exhibited in “No Gallery Leh How” (2007) at Home Club and also in the Singapore Art Museum as part of his art elective program exhibition in junior college. This time around, his painting encapsulates objectification, love, desire and disgust in a way which offers a discourse in the nature of the human gaze.

*Nigel's
upcoming work*





Julienne Tan's upcoming mixed-media illustrations tackle the grey areas of human relationships and the immaculate fear of opening up to someone completely. The third-year ADM student will be putting aside words and present a series of printed illustrations that are a mixture of pencil, pen, paint and string in an effort to get closer to the viewer.



*Julienne's
upcoming works*



Oh Ji Ji is a second-year ADM student and her upcoming pieces intertwine seemingly disparate subjects to represent the things we often take for granted in life. This is in the hope of bringing us attention to the things that are so close to us that we do not even notice.



*Jiji's
upcoming works*



*Veronica's
upcoming work*

Veronica Neo, is currently a fashion management student in Lasalle-SIA student and manages her own online apparel store, Canvas. In this exhibition, she will be displaying a series of chalk drawings that trace the various stages in development of a human relationship through pairs of hands



*Lee Kai &
Xing Yu's
upcoming
work*

Lee Kai & Siow Xing Yu, both graduated from NAFA and have exhibited extensively as students there. In their upcoming installation, they want to explore the relationship between closeness and familiarity with a fridge. By taking a household item filled with daily treats and replacing them with inedible items painted in pink and polka-dots, a playful conversation is created between the artwork and the audience.

